



Some positive side-effects of coronavirus

Nefeli Pelekanou

You always find a way to
make the best of a bad
situation
-Pete Waite

Pressing Environmental issues

Transportation industry:

- Responsible for 25-30% of the total greenhouse gas emissions
- Causes noise pollution which affects psychological and physical health
- Causes additional air pollution which leads to a range of respiratory, cardiovascular and neurological diseases





Pressing Environmental issue

Manufacturing industry:

(amongst others):

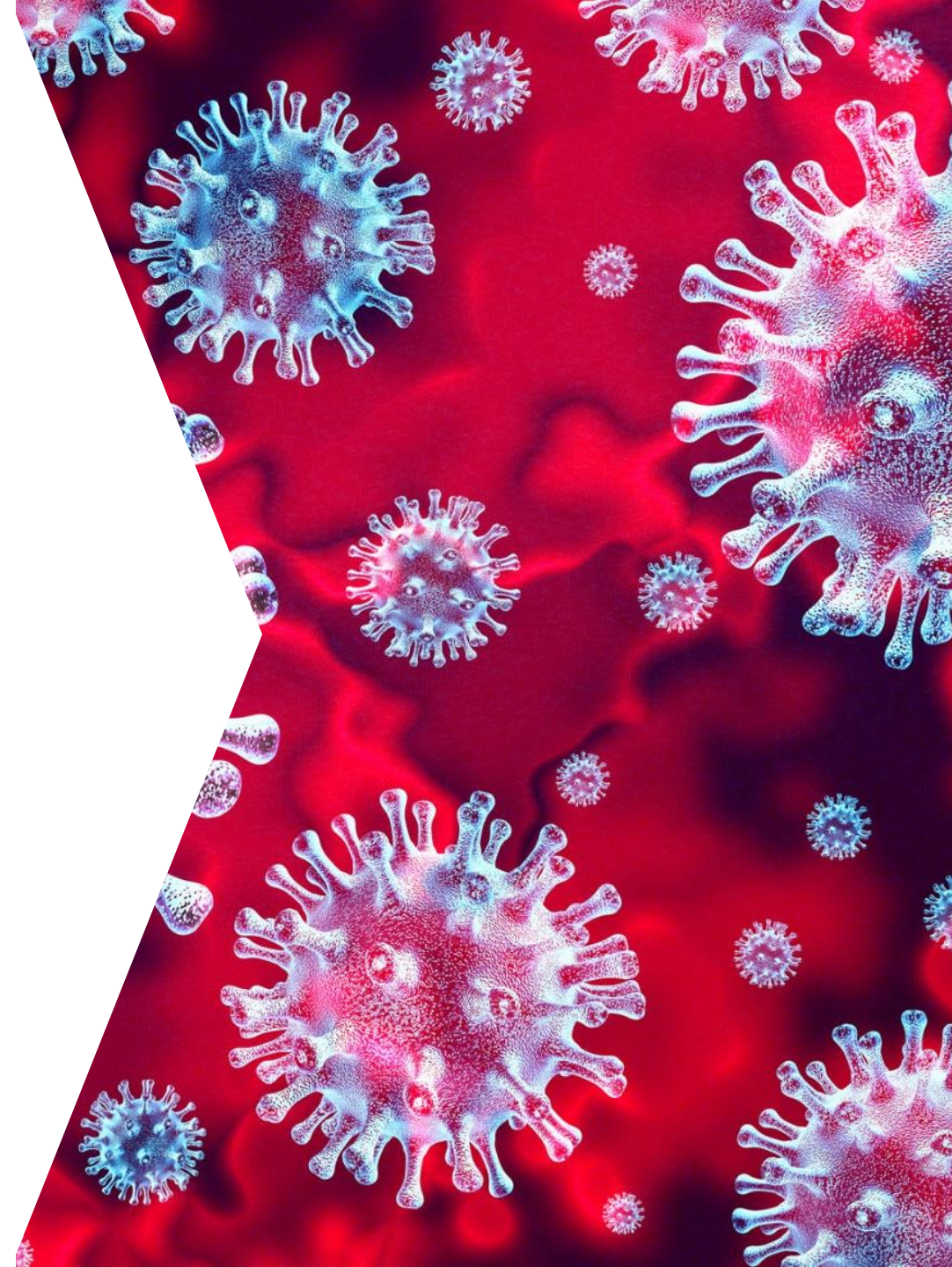
- Global warming due to hazardous chemicals released (e.g. methane, carbon dioxide). This influences temperature levels, sea levels, wildlife, and ice melting.
- Soil pollution, as the chemicals released can make the soil infertile, or contaminate our food

Some pressing social issues

- The Digital Divide, which is the gap between those who have access and know how to use internet technologies, and those who do not.
- Lack of accessibility in:
 - ✓ Employment: in 2019, only 56% of companies globally, allowed any form of teleworking, which reduced employment opportunities for people who can only work from home (people with disabilities or parents of young children)
 - ✓ Services: government services and education are not easily available to anyone who cannot visit facilities physically



**Coronavirus
Effects on these
issues:**





Coronavirus Effects:

Environment:

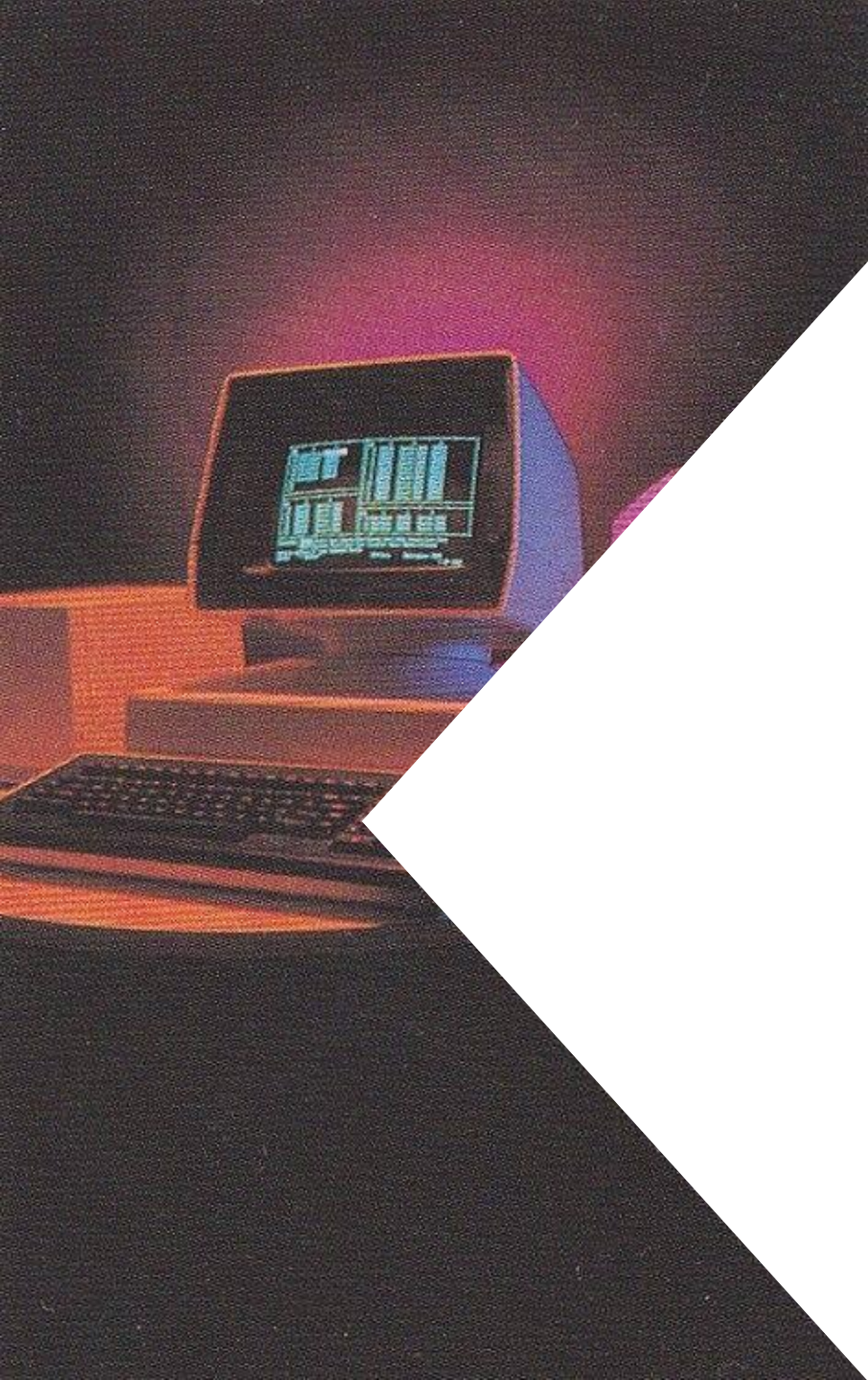
The majority of factories have temporarily stopped their operations, and the use of transportation services has been reduced significantly, both of which had impressive results!

Coronavirus Effects: Environmental

- China:
 - ✓ Emissions in China fell by 25%
 - ✓ Coal use fell by 40%
- Europe (France, Spain, Italy): Less nitrogen dioxide in the atmosphere
- Italy: Water quality has improved due to decreased boat activity in the canals of Venice
- USA (New York): Pollution has fallen by 50%
- In Japan, Canada, Wales (and other countries as well): animals have been wandering in previously-human-occupied areas:







Coronavirus Effects:

Socio-technological

Even if we could not exit the house freely, some jobs and tasks had to be done. Thus, we found ways to do them!

Coronavirus Effects:

Socio-technological

- Several countries (Greece included), have digitized a wide range of services, such as the process of obtaining doctor prescriptions or carrying out school registration processes (even libraries!)
- Increased teleworking, has highlighted the need for 5G technology, which will speed up the transition to it, to allow better online communication (and overall better internet connection)
- The rise of teleworking increases the accessibility of employment: companies have set up the infrastructure to support it and hence can continue using it with workers that have to work from home



Coronavirus Effects: Socio-technological

- Education has been moved online, which provides opportunities for areas and schools with staff shortages, but also for students who cannot go to school daily (due to a disability or being in a remote location). This also means an increase in educational opportunities for the public
- People being obligated to move to digital means of carrying out activities, results in combating technological illiteracy and therefore bridging the digital divide
- Many people have developed better personal hygiene practices, which will definitely be useful for the future





Bibliography

- <https://www.businessinsider.com/five-ways-coronavirus-will-affect-the-connectivity-tech-industry-2020>
- <https://www.bbc.com/future/article/20200326-covid-19-the-impact-of-coronavirus-on-the-environment>
- <https://www.elsner.com/impact-of-coronavirus-on-the-ecommerce-industry/\>
- https://transportgeography.org/?page_id=5711
- <http://www.field.org.uk/how-can-factories-affect-the-environment/>
- <https://www.smallbizgenius.net/by-the-numbers/remote-work-statistics/#gref>
- <https://askearn.org/topics/creating-an-accessible-and-welcoming-workplace/technological-accessibility/>
- <https://askearn.org/topics/creating-an-accessible-and-welcoming-workplace/technological-accessibility/>
- <https://www.standard.co.uk/news/world/positive-impact-environment-coronavirus-lockdown-a4404751.html>
- <https://www.gov.gr/ipiresies/ugeia-kai-pronoia>